

PART LEGEND

- (A) UPHOLSTERED STOOL HEAD
- (B) UPHOLSTERED STOOL SKIRT
- (C) SWIVEL ASSEMBLY
- (D) NUT & WASHER ASSEMBLY
- (E) STOOL COLUMN
- (F) SWIVEL ATTACHMENT BOLT AND WASHER ASSEMBLY

ASSEMBLY

1. MOUNT COLUMN AND BELL TO FLOOR - SET BELL IN CONTINUOUS SEALANT BEAD AROUND PERIMETER OF BELL. CLEAN EXCESS SEALANT FROM FLOOR.

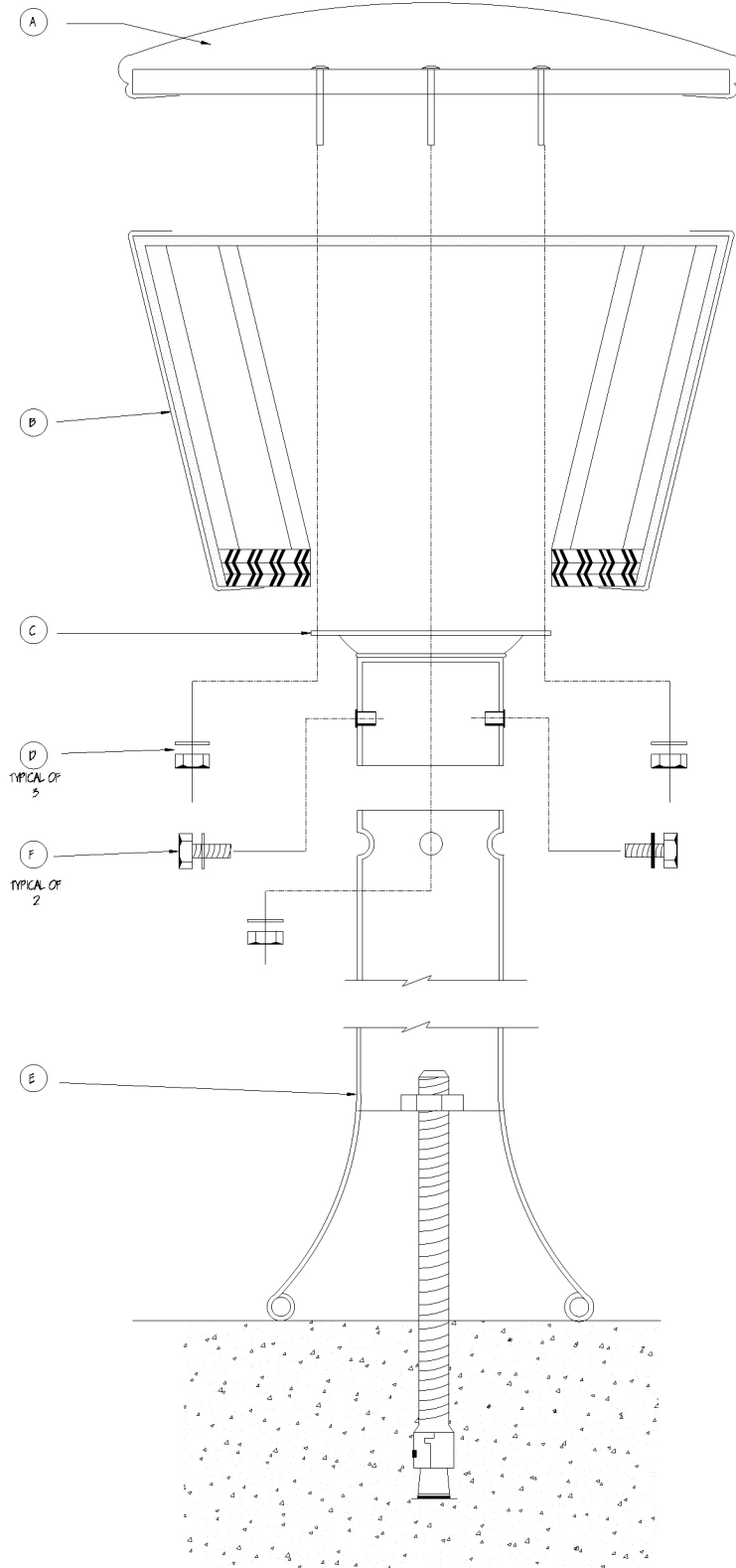
NOTE:
REMOVE AND REPLACE SWIVEL ONLY AS REQUIRED TO ACCESS HARDWARE DURING SHIPPING. INSPECT ALL SWIVELS FOR SECURE, TIGHT FIT - SNUG AS REQUIRED.

2. POSITION (B) UPHOLSTERED STOOL OVER SWIVEL AND ALIGN STUP HOLES.

3. SLIDE (A) UPHOLSTERED STOOL HEAD MOUNTING STUPTS THROUGH (B) SKIRT AND (C) SWIVEL ASSEMBLY.

4. ATTACH (D) NUT AND WASHER ASSEMBLY TO (A) MOUNTING STUPTS. TIGHTEN ASSEMBLY COMPLETE.

NOTE:
YOU WILL NEED A DEEP WELL SOCKET AND EXTENSION SUFFICIENT TO REACH AND TIGHTEN NUTS FROM UNDERSIDE.



TYPE - C FLOOR ATTACHMENT

1500-191 STOOL
ASSEMBLY GUIDE

DATE:
12-27-06

STOOL
ASSEMBLY

DRAWING BY:
KATE WILKERSON